

## Roof Example 1

The following images show a roof area on a commercial building. Figure 1 shows obvious damage to the acoustic tiles used for the soffit. The source was a leaking gutter above the soffit. The gutter was supposedly repaired and the tiles were replaced. The repaired area does not appear to show any signs of leakage. However, in Figure 2, infrared imaging shows that gutter is probably still leaking and the same problem will begin to show itself after time. The infrared image was taken two days after rainfall and about 1 month after the repairs were made.



Figure 1. Roof eave before repair.

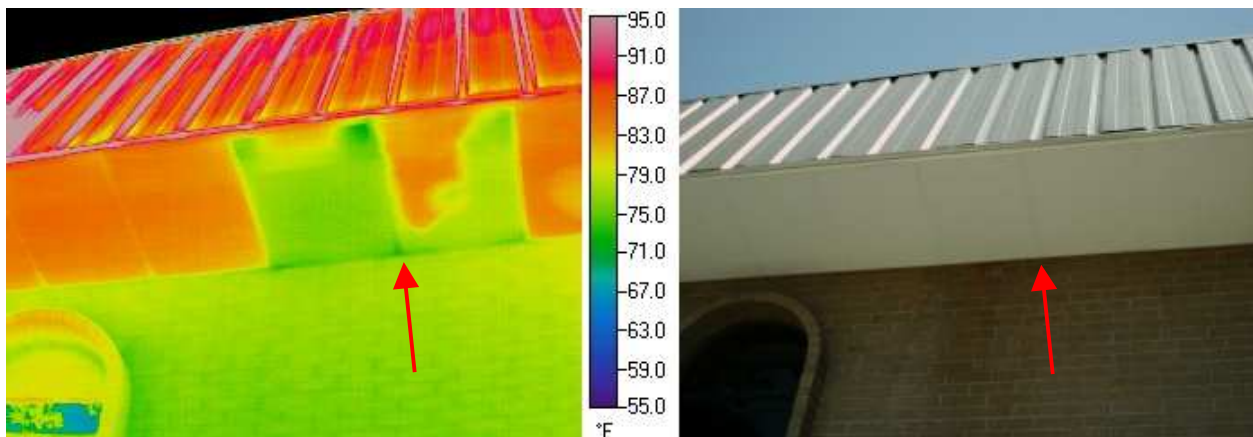


Figure 2. Infrared and visible images showing wet area after repairs.